



SOPHSTONE

PreFab
Ready-To-Ship



Sophstone PreFab is our ready-to-ship product line.

Sophstone's Project Division can manufacture custom sink

SOPHSTONE PreFab

Cut To Length

SOPHSTONE PreFabs can be easily trimmed to encompass nearly 90% of all possible project length and material requirements. Rarely is PreFab not a perfect fit.

Custom Station Placement

PreFab sinks are flexible with faucet stations as holes can be drilled to fit each installations individual needs.

***Drain Hole Pre-drilled**

PreFab Sizes

30" x 23-5/8" x 4-3/4"

48" x 23-5/8" x 4-3/4"

62" x 23-5/8" x 4-3/4"

70" x 23-5/8" x 4-3/4"

78" x 23-5/8" x 4-3/4"

86" x 23-5/8" x 4-3/4"

94" x 23-5/8" x 4-3/4"

102" x 23-5/8" x 4-3/4"

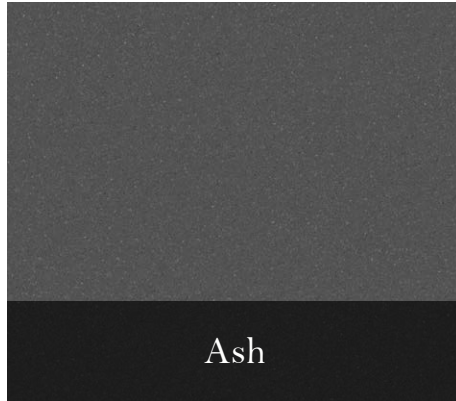
110" x 23-5/8" x 4-3/4"

126" x 23-5/8" x 4-3/4"

144" x 23-5/8" x 4-3/4"

SOPHSTONE

PreFab • Color Chart • How to Order



Color Call-outs

Ash	AH
Cotton	CN
Shadow	SW

PreFab Customization:

Trim-To-Fit:

TTFL#	Cut Left Side
TTFR#	Cut Right Side
TTFB#	Cut Both Sides

Holes:

H(#)	Cost Per Hole
------	---------------

Model Names

ST30
ST48
ST62
ST70
ST78
ST86
ST94
ST102
ST110
ST126
ST144

