

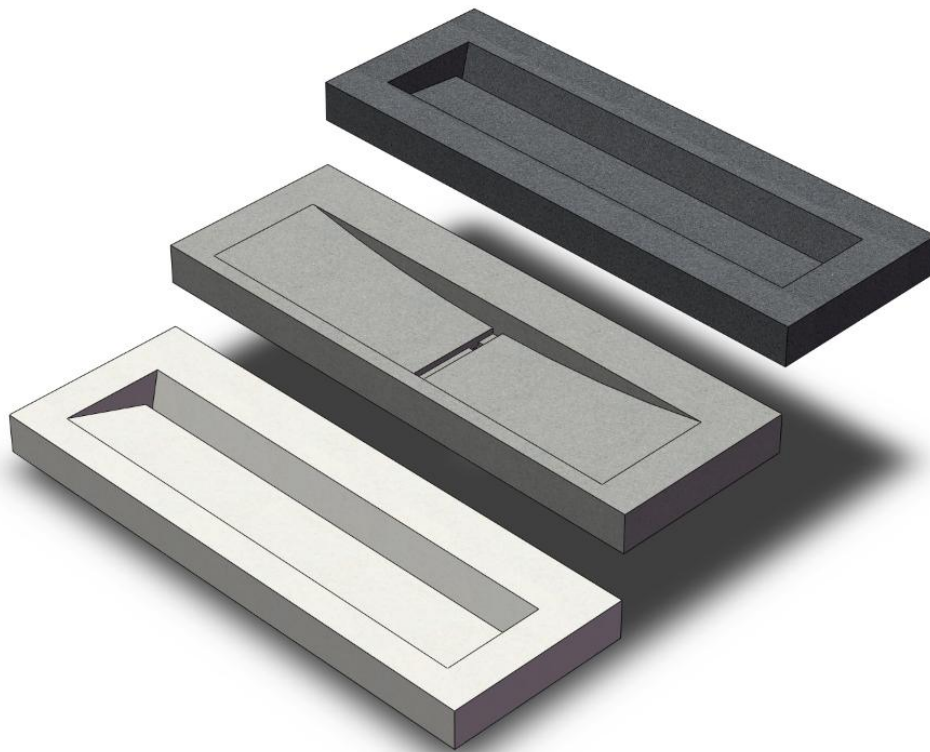
eko

EKO LIVING ELEMENTS, LLC

INSTALLATION GUIDE

Commercial Sinks / Mounting Brackets

January 2017



Questions?

Call us at 559.456.8913 or email at Commercial@eko-us.com

TABLE OF CONTENTS

Preface	-----	Page 1
Commercial "Incline" Sink (EKOIS-COM)	-----	Page 2
Commercial "Rettangolo" Sink (EKORS-COM)	-----	Page 4
Commercial "Trough" Sink (EKOTS-COM)	-----	Page 6

READ BEFORE CONTINUING

- **BRACKETS MUST BE INSTALLED BEFORE SHEETROCK/DRYWALL INSTALLATION**
- **ALL SINKS REQUIRE TWO PRIMARY (LARGER) BRACKETS.**
- **ALL SINKS GREATER THAN 40" LONG REQUIRE ONE OR MORE SECONDARY (SMALLER) BRACKETS.**
- **THE DISTANCE BETWEEN ANY TWO BRACKETS MUST NOT BE MORE THAN 36" APART ON CENTER. * ADDITIONAL SECONDARY BRACKETS MAY BE NEEDED TO MEET THIS REQUIREMENT DEPENDING ON SINK LENGTH.**
- **THE DISTANCE BETWEEN THE TWO PRIMARY BRACKETS IS DEPENDENT ON SINK LENGTH. REVIEW YOUR AVAILABLE DRAWINGS AND MATERIALS.**

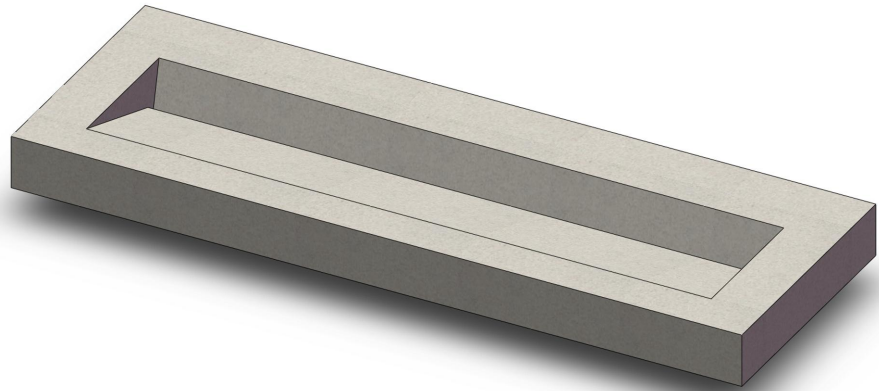
*Rule does not apply to trough sinks (EKOTS-COM); see trough sink installation pages for details (Page 6-7)

Questions?

Call us at 559.456.8913 or email at Commercial@eko-us.com

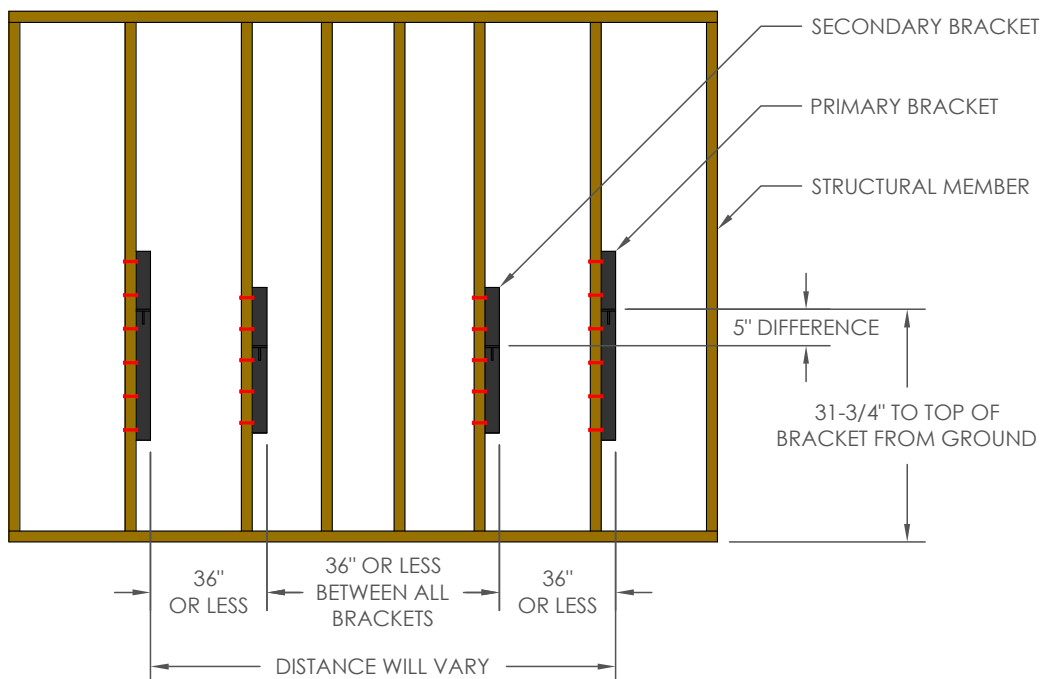
COMMERCIAL "INCLINE" SINK

EKOIS-COM



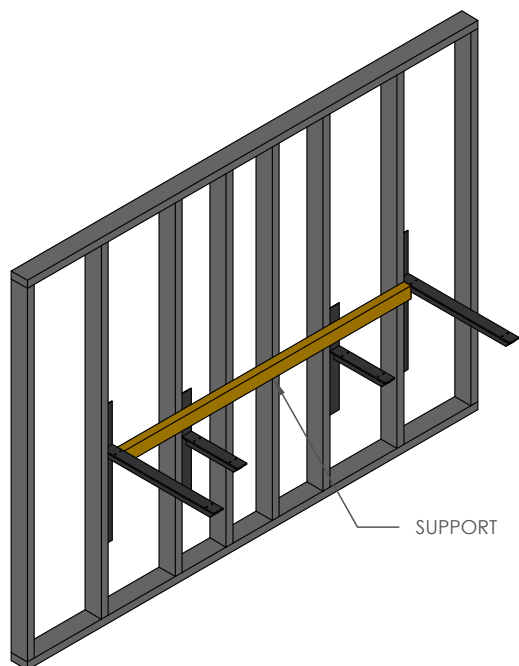
Bracket Placement

- Brackets are to be mounted with thru-bolts through a sturdy upright support such as a 2x4 stud or similarly strong member.
- The distance between any two brackets **cannot** be more than 36" on center. Secondary brackets should be centered between the primary brackets (refer to diagram). Additional secondary brackets may be needed depending on sink length if this requirement cannot be met.
- The sink **must** have a finished height of 34" from the ground to meet ADA compliancy. It is recommended to install the brackets at the shown heights and shim the sink a finished height of 34".



Questions?

Call us at 559.456.8913 or email at Commercial@eko-us.com

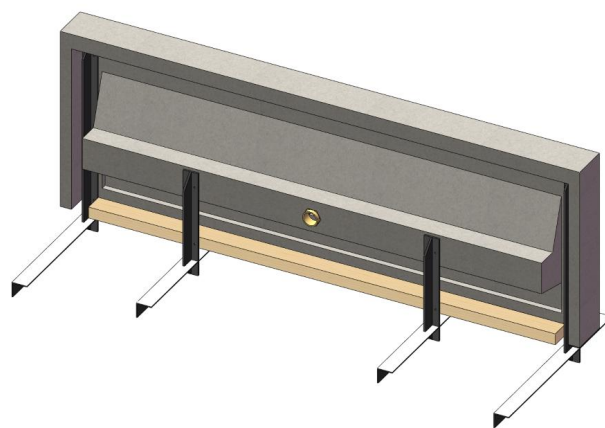


Additional Support

- An additional support will be needed that will span the distance between the two primary brackets. Typically, an appropriately sized wooden stud is sufficient.
- The support will be flush with the top of the primary brackets as shown.
- Fasten the support by any means necessary and ensure it is secure.

Sink Mounting

- **USE CAUTION.** The sink can be easily damaged or chipped during this step. Be careful to avoid possible collisions or scratches at all times.
- Mount the sink onto the brackets and additional support using construction adhesive to secure the sink in place as shown.



Questions?

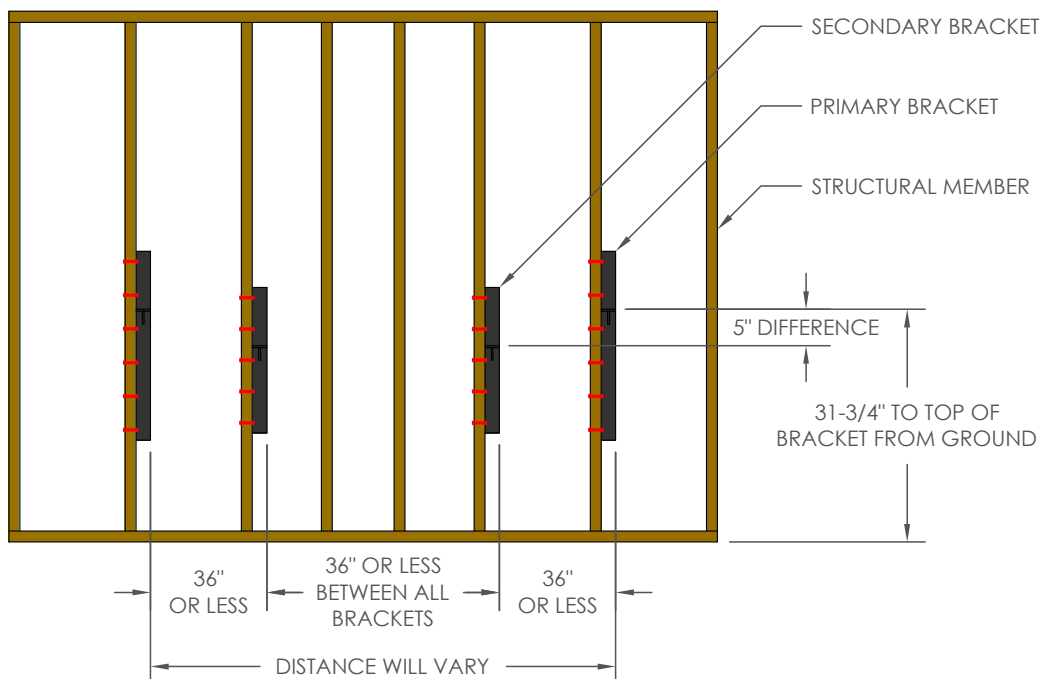
COMMERCIAL "RETTANGOLO" SINK

EKORS-COM



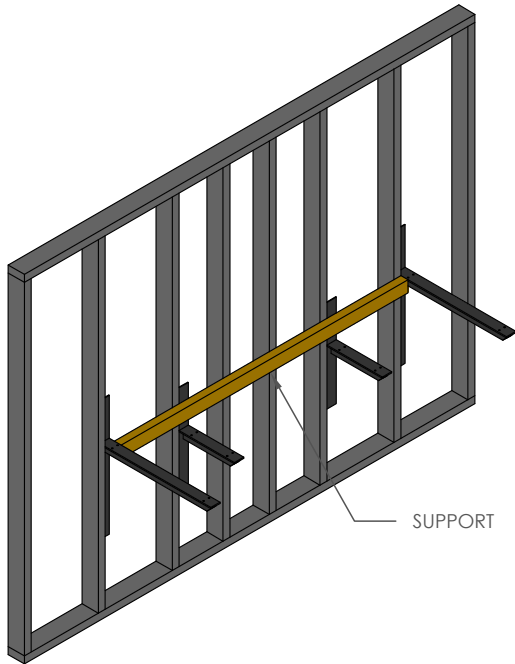
Bracket Placement

- Brackets are to be mounted with thru-bolts through a sturdy upright support such as a 2x4 stud or similarly strong member.
- The distance between any two brackets **cannot** be more than 36" on center. Secondary brackets should be centered between the primary brackets (refer to diagram). Additional secondary brackets may be needed depending on sink length if this requirement cannot be met.
- The sink **must** have a finished height of 34" from the ground to meet ADA compliancy. It is recommended to install the brackets at the shown heights and shim the sink a finished height of 34".



Questions?

Call us at 559.456.8913 or email at Commercial@eko-us.com



Additional Support

- An additional support will be needed that will span the distance between the two primary brackets. Typically, an appropriately sized wooden stud is sufficient.
- The support will be flush with the top of the primary brackets as shown.
- Fasten the support by any means necessary and ensure it is secure.

Sink Mounting

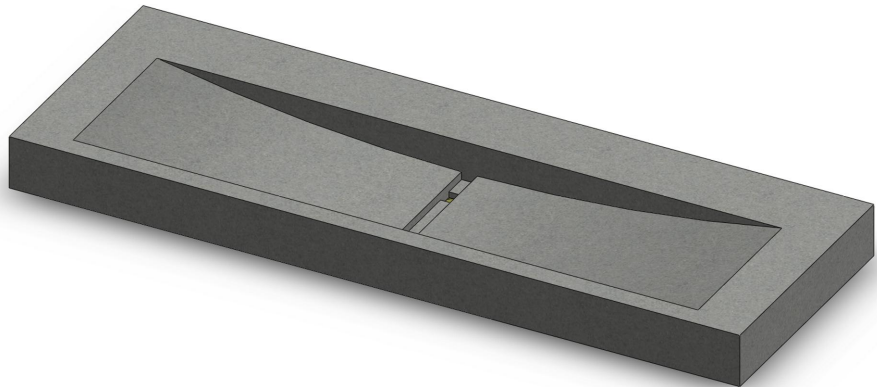
- **USE CAUTION.** The sink can be easily damaged or chipped during this step. Be careful to avoid possible collisions or scratches at all times.
- Mount the sink onto the brackets and additional support using construction adhesive to secure the sink in place as shown.



Questions?

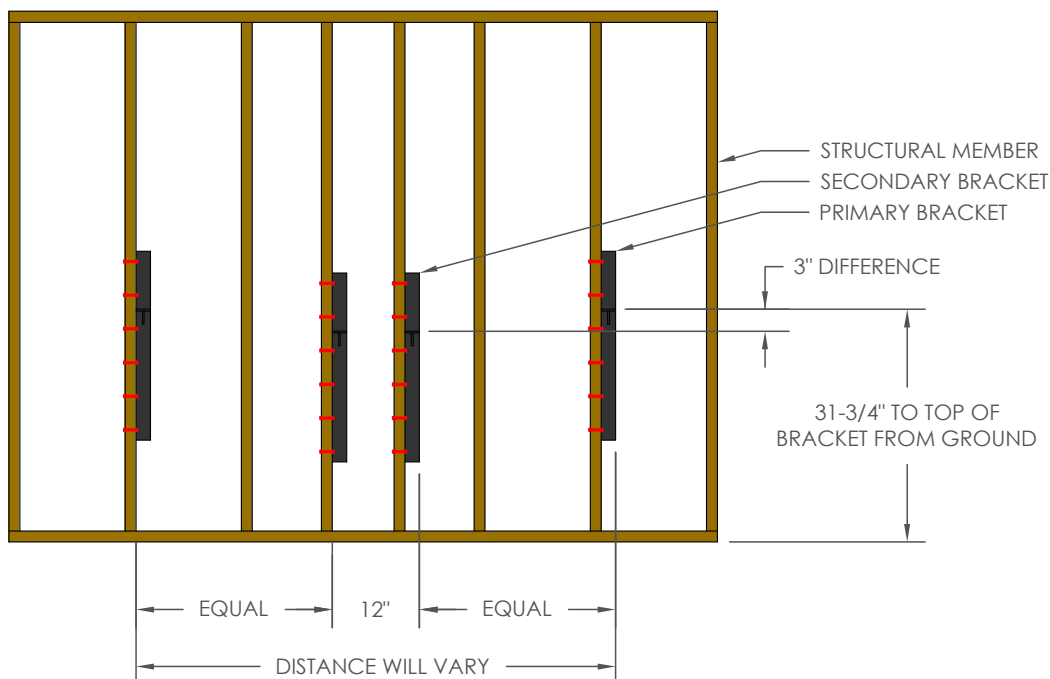
COMMERCIAL "TROUGH" SINK

EKOTS-COM



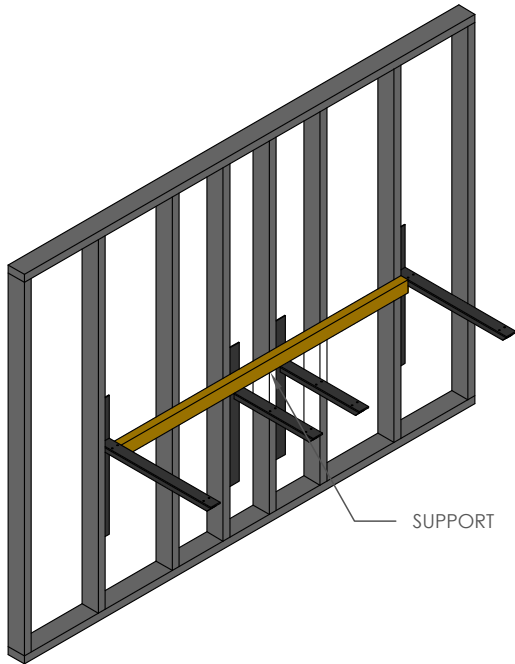
Bracket Placement

- Brackets are to be mounted with thru-bolts through a sturdy upright support such as a 2x4 stud or similarly strong member.
- The two secondary brackets must be 12" apart as shown in the diagram and centered between the two primary brackets. Two secondary brackets will be needed for each basin on multi-basin sinks.
- The sink **must** have a finished height of 34" from the ground to meet ADA compliancy. It is recommended to install the brackets at the shown heights and shim the sink a finished height of 34".



Questions?

Call us at 559.456.8913 or email at Commercial@eko-us.com



Additional Support

- An additional support will be needed that will span the distance between the two primary brackets. Typically, an appropriately sized wooden stud is sufficient.
- The support will be flush with the top of the primary brackets as shown.
- Fasten the support by any means necessary and ensure it is secure.

Sink Mounting

- **USE CAUTION.** The sink can be easily damaged or chipped during this step. Be careful to avoid possible collisions or scratches at all times.
- Mount the sink onto the brackets and additional support using construction adhesive to secure the sink in place as shown.



Questions?

Call us at 559.456.8913 or email at Commercial@eko-us.com